

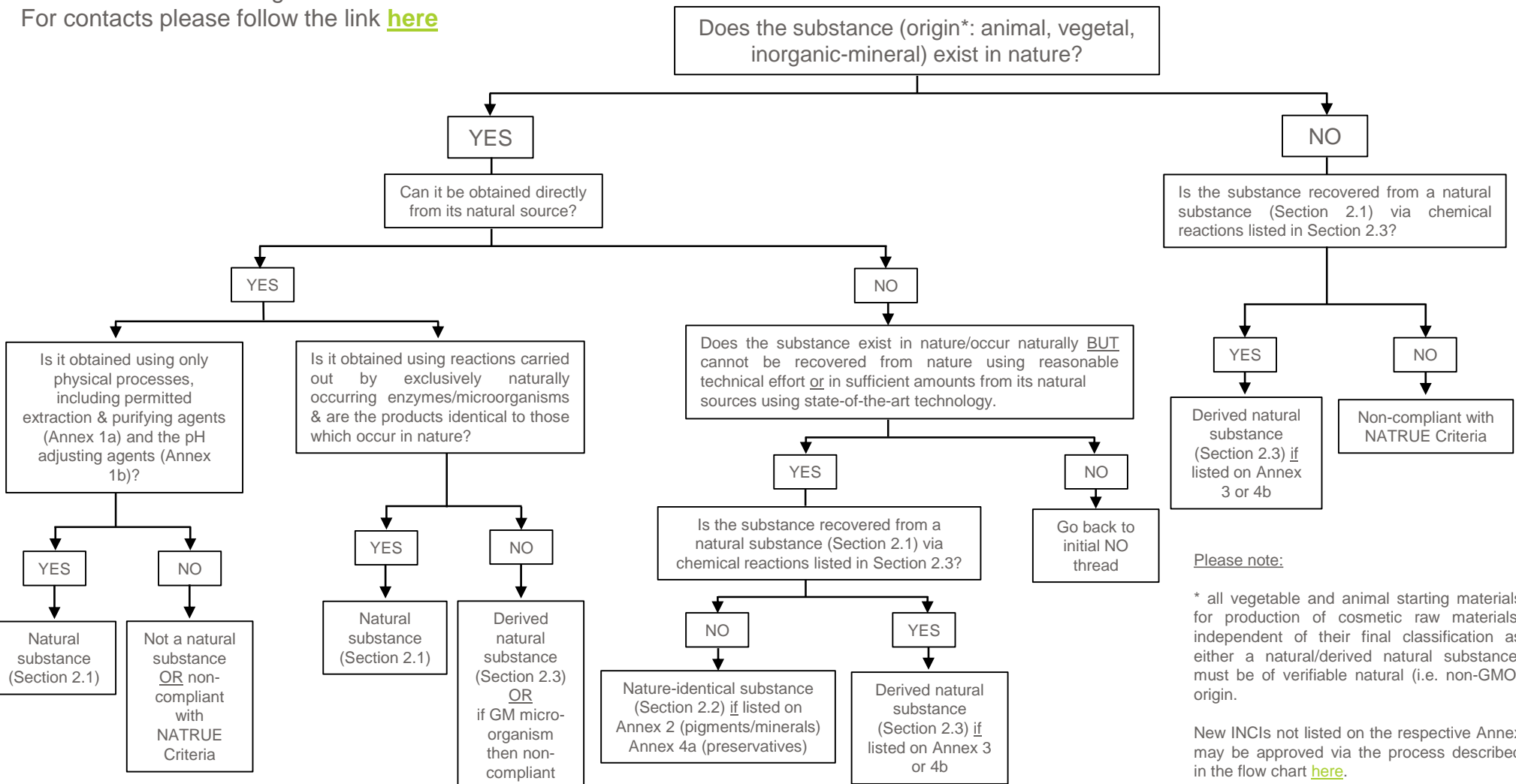


# What is the NATRUE classification of my substance?

For information purposes only

Please refer to the original [NATRUE documents](#) (criteria etc.) for the latest details and binding information

For contacts please follow the link [here](#)



Please note:

\* all vegetable and animal starting materials for production of cosmetic raw materials, independent of their final classification as either a natural/derived natural substance, must be of verifiable natural (i.e. non-GMO) origin.

New INCI's not listed on the respective Annex may be approved via the process described in the flow chart [here](#).